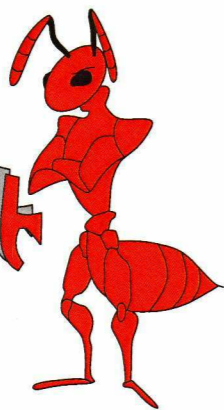


# The BullAnt Bites Back Rogaine















0 1km 2km 3km  
SCALE 1:50,000, 5 metre contour interval

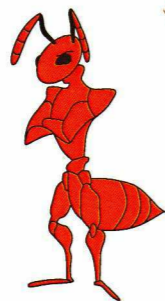


WA ROGAINE ASSOCIATION  
<http://wa.rogaine.asn.au>

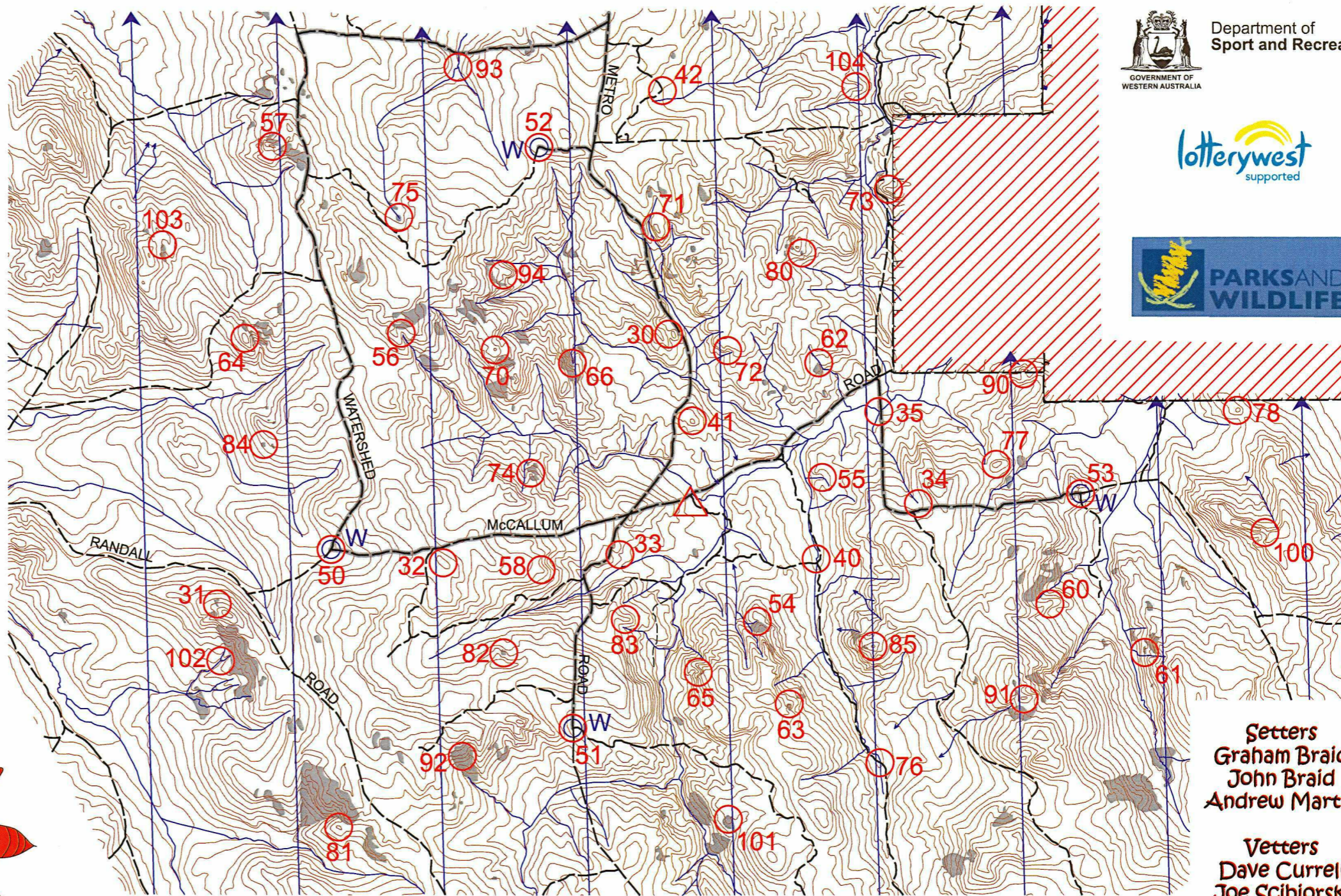
AUTUMN 12 HOUR ROGAINE  
inc CADET CHALLENGE  
2nd May 2015

## LEGEND

- Control 
- Contours 
- Hash House 
- Water Drop 
- Out of Bounds 
- Rocky outcrop 
- Patrolled Road 
- Gravel Track 
- Minor/overgrown track 
- Watercourse 
- Fence 
- Magnetic North Line 



Emergency satellite phone  
+881 622 449700  
Warren Smith 0407 773 697



Setters  
Graham Braid  
John Braid  
Andrew Martin

Vetters  
Dave Currell  
Joe Scibiorski

This map was produced using OCAD 9 by the Western Australian Rogaining Association, [wa.rogaine.asn.au](http://wa.rogaine.asn.au). Data supplied by Landgate and used under copy licence 393/93.

Possession of this map does not confer right of entry.

## The Bullant Bites Back – WARA 12hr Rogaine Control Descriptions – May 2<sup>nd</sup>, 2015



#	Description	Points	#	Description	Points
30	The saddle	30	70	The knoll	70
31	The rock surface, 60x10, eastern side	30	71	The knoll, northern end	70
32	The broad knoll	30	72	The gully	70
33	The shallow gully	30	73	The rocky spur	70
34	Head of the shallow watercourse	30	74	Southern side of a 3m boulder cluster	70
35	The watercourse, 10m west of the track/watercourse junction	30	75	The rock surface, 40x20, 50m south east	70
			76	The track/watercourse junction	70
40	The watercourse bend	40	77	The knoll	70
41	The knoll	40	78	The knoll	70
42	The track bend	40			
			80	The rock surface, 30x30, western end	80
50	The track junction (water)	50	81	The knoll	80
51	The track junction (water)	50	82	The rock surface, 140x20, southern side	80
52	The track bend (water)	50	83	The spur	80
53	The track junction (water)	50	84	The rock surface, 30x30, 10m north east	80
54	Head of the watercourse	50	85	The rocky knoll	80
55	The bend in the shallow watercourse	50			
56	The watercourse	50	90	The spur, on a knoll	90
57	The rocky knoll	50	91	The knoll	90
58	The spur	50	92	A small spur on the large rocky outcrop, southern end of a thicket	90
			93	The watercourse junction	90
60	The spur	60	94	The shallow gully	90
61	The rock surface, 30x80, southern end	60			
62	The rock surface, 150x100, northern end	60	100	The saddle	100
63	The rock surface, 40x80, northern end	60	101	A rocky knoll on the spur	100
64	The knoll	60	102	The watercourse junction	100
65	The gully	60	103	The rock surface, 70x25, north eastern end	100
66	The gully	60	104	The spur	100

### Important Information

#### Control Cards

From 0930 Saturday

#### Briefing

0945 Saturday

#### Start

1000 Saturday

#### Finish

2200 Saturday

#### Sunset

1739 Saturday

#### Moonrise

1638 Saturday

#### Water drops at controls

50, 51, 52, 53

#### Patrolled Roads (every 2 hrs)

As marked with grey shading

#### Late Penalty

10 points per minute or part thereof  
No points after 2230

**Number of controls used = 50**

**Total points available = 3230**